



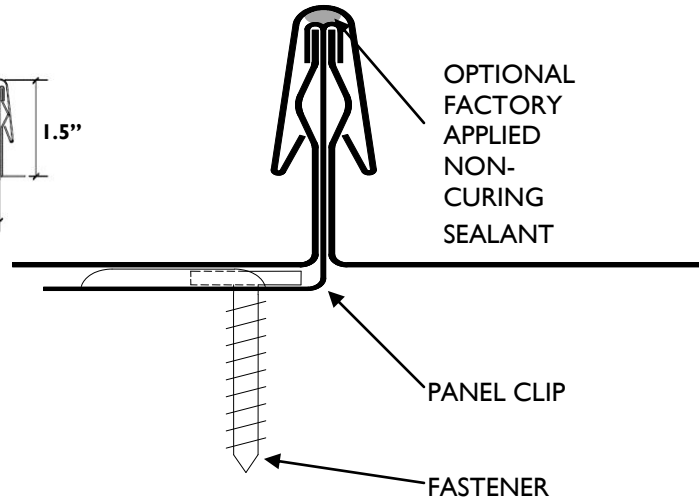
SNAP-ON-SEAM HIGH PROFILE

SS15



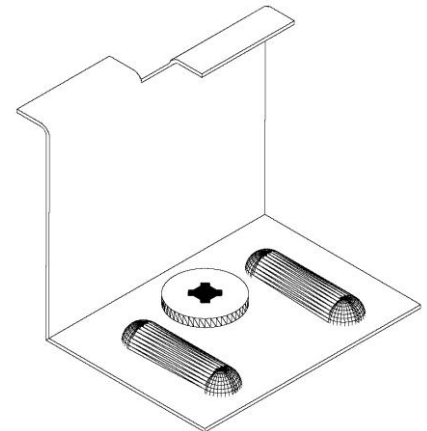
www.dmimetals.com

SS15 PANEL PROFILE:



SEAM CROSS SECTION

OPTIONAL STIFFENER PATTERNS:



SS15 CLIP

SNAP-ON SEAM HIGH PROFILE SS15 (continued)

STANDARD PRODUCT OFFERING

24 ga. Steel and .032 Aluminum:

<u>MODEL NO.</u>	<u>SEAM ON-CENTER</u>
SS1512	12"
SS1516	16"
SS1518	18"

16 oz. and 20 oz. Copper:

<u>MODEL NO.</u>	<u>SEAM ON-CENTER</u>
SS1512	12"
SS1518	18"

OPTIONAL PRODUCT OFFERING

SNAP-ON-SEAM SS20 (2" high seam) - NO UL90 RATING

24 ga. Steel and .032 Aluminum:

<u>MODEL NO.</u>	<u>SEAM ON-CENTER</u>
SS2012	12"
SS2018	18"

Custom panel widths are available. Consult DMI for costs and lead times.

PRODUCT: SNAP-ON-SEAM SS15 is a non-structural engineered snap-together panel system. The system is designed with two components: the panel pan and the seam cover. SNAP-ON-SEAM is a non-directional panel system allowing installers more control during installation over seam layout and symmetry of the panel area. SNAP-ON-SEAM is the easiest panel system to install over difficult roof plans.

NOTE: Continuous lengths from 2'-6" (min.) up to 70'-0" (max.) is standard. Panel lengths over 53' require additional crating fees and special hauling permits. Contact DMI for details.

22 ga. steel and .040 aluminum are not stocked in all colors. Minimum order quantities and extended lead times may accompany panel orders when utilizing these substrates

Seam caps are available in 24 Ga. Steel, .032 Aluminum, and 16 oz. copper only.

Oil-canning, the slight waviness inherent with light gauge metal, does not affect the finish or structural integrity of the panel and is therefore not cause for rejection.

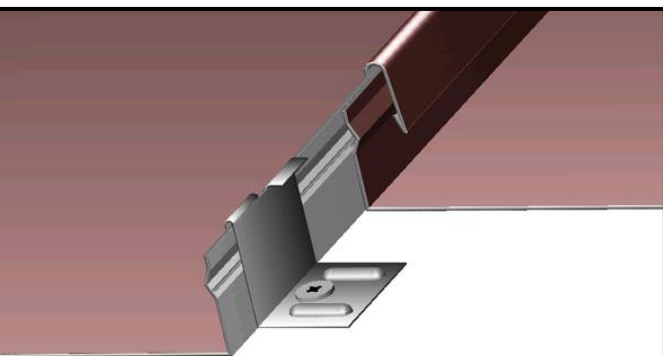
See front for optional stiffener patterns.

ROOF ASSEMBLIES: SNAP-ON-SEAM requires a solid substrate since it is a non-structural panel system. This system may be installed over plywood sheathing, nail base insulation, or corrugated metal deck.

PRODUCT USES AND APPLICATIONS: Product uses include roofing with roof slopes as low as 3:12, vertical fascia, mansards and equipment screens. This system may be installed on curved (radii greater than 70 ft.) or tapered roof areas.

ADVANTAGES:

1. UL-90 classified assemblies: high wind uplift loading capacities
2. ASTM Air and Water Infiltration Tested: proven air and water tightness
3. Optional Factory Applied Non-Curing Sealant: superior watertightness
4. Engineered Snap-Together Design: easy installation
5. Expansion Clips: allows for unlimited thermal expansion and contraction
6. Continuous Interlocking Seam: no seam disengagement
7. Anti-Siphoning Seam Design: prevents water infiltration
8. Continuous Rollformed Lengths: eliminates need for panel lap joints



DIMENSIONAL METALS, INC.

DMI has specialized in the manufacturing of Architectural Metal Panel Systems and Fabricated Architectural Sheet Metal for the construction industry for over 20 years. We use the most technologically advanced Fixed Base Roll-Forming Equipment with in house quality control so that we can offer the highest product quality available.

Please contact our Engineering Department today for technical assistance.

Headquarters
58 Klema Drive North
Reynoldsburg, OH 43068
Tel: 800-828-1510
Fax: 740-927-3319

North Carolina
Tel: 800-919-1510

Web: www.dmimetals.com
E-mail: sales@dmimetals.com

